

REPLACEMENT PARTS

Item Number	Description	MSRP
EFLB18003S	1800mAh 3S 11.1V 20C LiPo, 13GA EC3	83.99
EFLC3115	3-Cell 11.1V Li-Po Balancing Charger, 1.8A	32.99
EFLA325H	25-Amp Helicopter Brushless ESC	49.99
EFLM1350H	420 Brushless Helicopter Motor, 3800Kv	62.99
EFLH1410	Pinion Gear, 10T 0.5M: B400	2.49
EFLH1415A	325mm Wood Main Rotor Blade Set, White: B400	12.99
EFLH1416	Main Rotor Blade Mounting Screw and Nut Set: B400	2.49
EFLH1417	Main Rotor Blade Grip/Holder Set: B400	5.99
EFLH1418	Bell Mixer Arm and Pushrod/Link Set: B400	4.99
EFLH1419	Bell Mixer Pushrod/Link (2): B400	1.99
EFLH1420	Thrust Bearing 3x8x3.5mm (2): B400	5.99
EFLH1421	Spindle/Feathering Shaft (2): B400	4.49
EFLH1422	Head Block/Rotor Housing Set: B400	4.99
EFLH1423	Flybar Seesaw Holder Set: B400	2.99
EFLH1424	Flybar Paddle Control Frame Set: B400	6.99
EFLH1425	Flybar, 220mm (2): B400	3.99
EFLH1427	Flybar Paddle Mounts/Adapters: B400	2.49
EFLH1428	Flybar Paddle Set for Mounts/Adapters: B400	2.99
EFLH1430	Washout Base: B400	3.99
EFLH1431	Washout Control Arm and Link Set: B400	4.99
EFLH1432	Washout Control Arm Link Set: B400	1.99
EFLH1433	Aluminum and Composite Swashplate: B400	15.99
EFLH1434	Anti-Rotation Bracket/Guide: B400	2.49
EFLH1435	Control/Linkage Ball, Long (4): B400	3.99
EFLH1436	Control/Linkage Ball, Short (10): B400	6.99
EFLH1437	Ball Link Set (20): B400	3.99
EFLH1438	Linkage Rod/Pushrod Set: B400	3.99
EFLH1439	Main Frame Set: B400	11.99
EFLH1440	Elevator Control Lever Set: B400	3.99
EFLH1441	Bearing 5x8x2.5mm (2): B400	3.99
EFLH1442	Bearing 5x10x4mm (2): B400	3.99
EFLH1443	Aluminum Motor Mount Set: B400	8.99
EFLH1444	Hook and Loop Battery Strap: B400	2.49
EFLH1445W	Landing Gear Strut Set, White: B400	3.99
EFLH1446B	Landing Gear Skid Set, Black: B400	3.99
EFLH1447	Main Shaft (2): B400	4.99
EFLH1448	Main Shaft Retaining Collar: B400	2.49
EFLH1449	One-Way Bearing Shaft and Shim Set: B400	2.99
EFLH1450	One-Way Bearing 6x10x12mm: B400	5.99
EFLH1451	Main Gear w/o One-Way Bearing: B400	3.49
EFLH1452	Main Gear w/One-Way Bearing: B400	8.99
EFLH1453	Main Tail Drive Gear: B400	3.99

Item Number	Description	MSRP
EFLH1454	Tail Drive Shaft Lower Bearing Block/Mount: B400	2.49
EFLH1455	Tail Drive Gear/Pulley Assembly: B400	4.99
EFLH1456	Tail Drive Belt: B400	4.99
EFLH1457	Tail Boom (2): B400	6.99
EFLH1458	Tail Servo Boom Mount: B400	2.49
EFLH1459	Tail Linkage/Pushrod Set: B400	3.49
EFLH1460	Tail Pushrod Support/Guide Set: B400	2.99
EFLH1461	Tail Boom Brace/Support Set: B400	3.99
EFLH1462	Horizontal Stabilizer/Fin Mount: B400	2.49
EFLH1463	Tail Case Set: B400	3.99
EFLH1464	Tail Drive Belt Guide Pulley/Tensioner: B400	2.99
EFLH1465	Tail Rotor Shaft and Drive Pulley (2): B400	4.49
EFLH1466	Bearing 2x5x2.5mm (2): B400	3.99
EFLH1467	Tail Rotor Pitch Lever Set: B400	3.99
EFLH1468	Tail Rotor Pitch Control Slider Set: B400	5.99
EFLH1469	Aluminum Tail Rotor Hub Set: B400	2.99
EFLH1470	Tail Rotor Blade Grip/Holder Set: B400	3.99
EFLH1471	Tail Rotor Blade Set: B400	2.99
EFLH1472Y	Stabilizer/Fin Set, Yellow: B400	4.49
EFLH1473	Complete Hardware Set: B400	12.99
EFLH1476	Servo Arm Set, DS75: B400	4.99
EFLH1479	Canopy Mount Rod & Grommet Set: B400	2.49
EFLH1481	Body/Canopy, Tribal w/Decals: B400	15.99
EFLH1482	Decal Sheet, Tribal: B400	3.99

OPTIONAL PARTS

Item Number	Description	MSRP
EFLC4025	100-240V AC to 12V DC, 2.5 Amp Power Supply	29.99
EFLH1001	Mini Helicopter Main Blade Holder: B400	3.99
EFLH1409	Pinion Gear, 9T 0.5M: B400	2.49
EFLH1411	Pinion Gear, 11T 0.5M: B400	2.49
EFLH1415C	325mm Carbon Fiber Main Rotor Blade Set: B400	46.99
EFLH1471C	Tail Rotor Blade Set, Carbon Fiber: B400	21.99
EFLH1472B	Stabilizer/Fin Set, Blue: B400	4.49
EFLH1472C	Stabilizer/Fin Set, Carbon Fiber: B400	21.99
EFLH1472W	Stabilizer/Fin Set, White: B400	4.49
EFLH1480	Body/Canopy, White w/o Decals	12.99
EFLH1483	Body/Canopy, Flame w/Decals: B400	22.99
EFLH1484	Decal Sheet, Flame: B400	3.99

FREQUENTLY ASKED QUESTIONS

What makes the Blade 400 unique when compared to other mini helicopters on the market?

- The Blade 400 offers a number of features not found on other similar class RTF (Ready-To-Fly) and kit models:
- 100% factory-assembled and test-flown so it's ready to fly within minutes of opening the box
 - Simple and lightweight CCPM (Cyclic/Collective Pitch Mixing) control
 - Aluminum and composite swashplate for added durability and precision
 - Reliable and efficient belt-driven tail rotor
 - 420H brushless outrunner motor, 25-amp brushless ESC and 3S 11.1V 1800mAh 20C Li-Po battery for incredible power and performance
 - DS75 Digital Sub-Micro servos and G110 Micro Heading Lock Gyro for precise and powerful control
 - Spektrum DX6i 2.4GHz DSM2 computer programmable transmitter and AR6100e Microlite receiver

What advantages does the larger size of the Blade 400 offer over micro-class helicopters?

The Blade 400's larger size offers improved visibility and added stability, especially when flying outdoors in breezy conditions that might ground other micro-class helis. It also allows for incredible power and performance not typically found in micro-class or even other mini-class models.

Where can the Blade 400 be flown?

The Blade 400 is primarily intended for outdoor flying, however, it can also be flown by experienced pilots in large indoor facilities, such as golf domes and multiple-court gyms, when the areas are free of people and obstructions.

What are the flight performance capabilities of the Blade 400?

The Blade 400 is capable of everything from smooth hovering to 3D aerobatic flying right out of the box. This makes it a great choice for intermediate pilots looking for their first 3D aerobatic platform and mini-helicopter model, especially those who have already mastered flying the Blade CP+ and Blade CP Pro. It's also an excellent choice for experienced pilots looking for a fully 3D capable RTF model.

What is unique about the about the included Spektrum DX6i transmitter and AR6100e receiver?

Perhaps the most unique feature of the Blade 400 is that it includes a Spektrum DX6i 2.4GHz DSM2 computer programmable transmitter and feather-light AR6100e Microlite receiver. This radio system combination provides freedom from frequency restrictions and interference, meaning you can fly just about anywhere, anytime. Plus, the DX6i's DSM2 technology offers other unique advantages like faster control response and innovative features such as ServoSync™, which automatically resequences transmitter data so mixed servos receive their pulses at the same time for maximum CCPM precision and response.

Other DX6i features include:

- Full-range capability
- Helicopter and airplane programming
- 10-model memory
- 3-axis dual rates and exponential
- Travel adjust
- Servo monitor
- Two 5-point throttle curves
- Two 5-point pitch curves
- Gyro sensitivity programming

The DX6i is not only perfectly suited for the Blade 400—it can also be used to fly just about any size and type of model due to its full-range and programming capabilities.

BLADE™ 400 3D

BLADE 400 3D RTF HELI

EFLH1400

- Main Rotor Diameter: 28.2 in (718mm)
- Tail Rotor Diameter: 5.3 in (135mm)
- Height: 9.0 in (230mm)
- Length: 25.6 in (650mm)
- Weight with Battery: 23.5 oz (665 g)
- Motor: 420H brushless outrunner, 3800Kv (installed)
- ESC: 25-amp brushless (installed)
- Battery: 3S 11.1V 1800mAh 20C Li-Po (included)
- Charger: DC Li-Po balancing charger (included)
- Transmitter: Spektrum DX6i 2.4GHz DSM2
- 6-channel computer radio (included)
- Receiver: Spektrum AR6100e 2.4GHz DSM2
- Microlite Receiver (installed)
- Servos: E-flite DS75 Digital Sub-Micro (4 installed)
- Gyro: E-flite G110 Micro Heading Lock (installed)



The Blade 400 comes completely assembled and ready for flight.

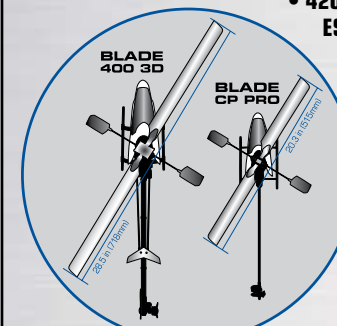
A Bigger Blade

The All-New Blade 400 3D Ready-To-Fly Mini Heli

The Blade™ 400 3D will give intermediate to advanced heli pilots a ready-to-fly experience like no other. It comes out of the box 100% factory built and equipped with state-of-the-art features like brushless power, digital servos, a heading lock gyro, CCPM control and symmetrical blades. It's also big enough that you can fly outdoors in breezier conditions that would ground smaller micro-helis. And because it's flight tested at the factory no pre-flight setup is required. The Blade 400 3D is ready for everything from smooth hovering to 3D aerobatic flying as soon as you finish charging the battery.

FEATURES & BENEFITS

- Completely assembled and test flown at the factory
- Capable of sport flying and 3D aerobatics right out of the box
- Includes Spektrum's DX6i 2.4GHz DSM2 6-Channel computer programmable transmitter and factory-installed AR6100e Microlite Receiver
- DS75 Digital Sub-Micro servos and G110 Micro Heading Lock gyro offer precise and powerful control
 - 420H brushless motor, 25-amp brushless ESC and 3S 11.1V 1800mAh 20C Li-Po battery deliver incredible power and performance
 - CCPM control with push-pull elevator and direct-to-swash aileron/pitch linkages



E-flite
ADVANCING ELECTRIC FLIGHT

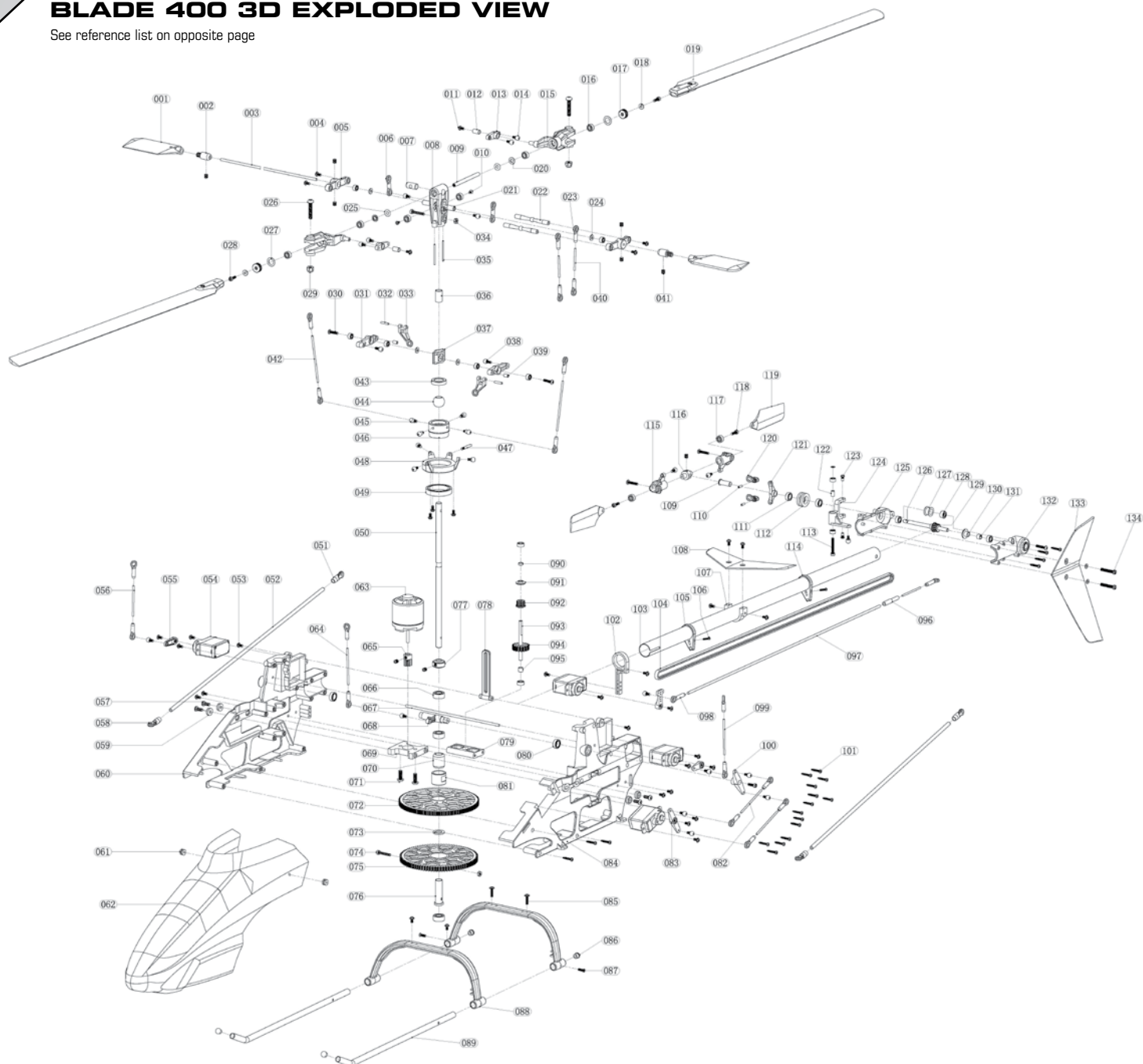


SPEKTRUM DX6i RADIO SYSTEM

The Blade 400 3D is the first ready-to-fly mini-heli to come equipped with Spektrum's advanced DX6i 2.4GHz DSM2™ 6-channel programmable aircraft system. Besides providing freedom from frequency restrictions and interference, the DX6i's DSM2 technology offers other unique advantages like faster control response and innovative features such as ServoSync™. ServoSync automatically resequences transmitted data so mixed servos receive their pulses at the same time so you can fly extreme 3D aerobatics with absolute precision. The system also includes the feather-light, 4.4-gram Spektrum AR6100e Microlite Receiver.

BLADE 400 3D EXPLODED VIEW

See reference list on opposite page



PARTS LISTING

Exploded View Reference Number	Description (Quantity Required)	Item Number	Exploded View Reference Number	Description (Quantity Required)	Item Number
001	Flybar Paddle (2)	EFLH1428	069	Motor Mount (1)	EFLH1443
002	Flybar Paddle Mount/Adapter (2)	EFLH1427	070	One-Way Bearing (1)	EFLH1450
003	Flybar (1)	EFLH1425	071	Socket Head Button Screw M3×8mm (2)	EFLH1473
004	Screw M2×6mm (4)	EFLH1473	072	Main Gear (1)	EFLH1451
005	Flybar Paddle Control Frame Arm (2)	EFLH1424	073	Washer/Shim 6×10×1mm (1)	EFLH1449
006	Bell Mixer Pushrod/Link (2)	EFLH1419	074	Socket Head Cap Screw M2×12mm (2)	EFLH1473
007	Spindle Brushing (1)	EFLH1422	075	Main Tail Drive Gear (1)	EFLH1453
008	Head Block/Rotor Housing (1)	EFLH1422	076	One-Way Bearing Shaft (1)	EFLH1449
009	Spindle/Feathering Shaft (1)	EFLH1421	077	Main Shaft Retaining Collar (1)	EFLH1448
010	Screw T1.7×3mm (2)	EFLH1473	078	Anti-Rotation Bracket/Guide (1)	EFLH1434
011	Screw T1.7×4mm (14)	EFLH1473	079	Tail Drive Shaft Lower Bearing Block/Mount (1)	EFLH1454
012	Bell Mixer Arm Brushing (2)	EFLH1418	080	Bearing 5×8×2.5mm (2)	EFLH1441
013	Bell Mixer Arm (2)	EFLH1418	081	One-Way Bearing Sleeve (1)	EFLH1451
014	Control/Linkage Ball, Short (20)	EFLH1436	082	Linkage Rod/Pushrod, 52mm (2)	EFLH1438
015	Main Rotor Blade Grip/Holder (2)	EFLH1417	083	Elevator Servo Arm (2)	EFLH1476
016	Bearing 3×6×2.5mm (10)	EFLH1115	084	Main Frame, Left (1)	EFLH1439
017	Thrust Bearing 3×8×3.5mm (2)	EFLH1420	085	Screw T2×8mm (2)	EFLH1473
018	Washer 2×5×2.5mm (7)	EFLH1473	086	Landing Skid End Cap (4)	EFLH1446B
019	Main Rotor Blade (2)	EFLH1415A	087	Screw T1.7×4mm (2)	EFLH1473
020	Step Washer 2×3×2mm (2)	EFLH1473	088	Landing Gear Strut (2)	EFLH1445W
021	Flybar Seesaw Holder (1)	EFLH1423	089	Landing Skid (2)	EFLH1446B
022	Flybar Paddle Control Frame Rod (2)	EFLH1424	090	Spacer 3×4×2.5mm (1)	EFLH1455
023	Ball Link (19)	EFLH1437	091	Tail Drive Pulley Cap (1)	EFLH1455
024	Washer 3×5.5×0.55mm (2)	EFLH1473	092	Tail Drive Pulley (1)	EFLH1455
025	O-Ring (2)	EFLH1158	093	Tail Drive Gear/Pulley Shaft (1)	EFLH1455
026	Socket Head Button Screw M3×16mm (2)	EFLH1416	094	Secondary Tail Drive Gear (1)	EFLH1455
027	Washer/Shim 5×8×0.1mm (2)	EFLH1420	095	Spacer 3×4×3.1 (1)	EFLH1455
028	Socket Head Cap Screw M2×6mm (2)	EFLH1473	096	Tail Linkage/Pushrod Joiner (1)	EFLH1459
029	Nylon Insert Lock Nut M3 (2)	EFLH1416	097	Tail Linkage/Pushrod (1)	EFLH1459
030	Screw M2×10mm (5)	EFLH1473	098	Tail Linkage/Pushrod Ball Link (1)	EFLH1459
031	Washout Control Arm (2)	EFLH1431	099	Linkage Rod/Pushrod, 38mm (1)	EFLH1438
032	Pin 1.5×8mm (2)	EFLH1431	100	Elevator Control Lever Arm (1)	EFLH1440
033	Washout Control Arm Link (2)	EFLH1431	101	Screw T1.7×9mm (2)	EFLH1473
034	Nut M2 (2)	EFLH1473	102	Tail Servo Boom Mount (1)	EFLH1458
035	Washout Base Guide Pin (2)	EFLH1422	103	Tail Boom (1)	EFLH1457
036	Washout Base Bushing (1)	EFLH1430	104	Tail Drive Belt (1)	EFLH1456
037	Washout Base	EFLH1430	105	Tail Pushrod Support/Guide, Long (1)	EFLH1460
038	Control/Linkage Ball, Short w/Long Thread (2)	EFLH1431	106	Screw T1.4×5mm (2)	EFLH1473
040	Linkage Rod/Pushrod, 16mm (3)	EFLH1438	107	Horizontal Stabilizer/Fin Mount (1)	EFLH1462
041	Setscrew M3×3 (9)	EFLH1473	108	Horizontal Stabilizer/Fin (1)	EFLH1472Y
042	Linkage Rod/Pushrod, 45mm (2)	EFLH1438	109	Tail Rotor Pitch Control Slider Bushing (1)	EFLH1468
043	Swashplate Control Ball Bushing (1)	EFLH1433	110	Pin 1.5×5mm (2)	EFLH1468
044	Swashplate Control Ball (1)	EFLH1433	111	Bearing 4×7×2.5mm (2)	EFLH1468
045	Control/Linkage Ball, Long (4)	EFLH1435	112	Tail Rotor Pitch Control Slider Ring (1)	EFLH1468
046	Inner/Upper Swashplate Ring (1)	EFLH1433	113	Socket Head Cap Screw M2×14mm (1)	EFLH1473
047	Anti-Rotation Pin (1)	EFLH1433	114	Tail Pushrod Support/Guide, Short (1)	EFLH1460
048	Outer/Lower Swashplate Ring (1)	EFLH1433	115	Tail Rotor Blade Grip/Holder (2)	EFLH1470
049	Bearing 17×23×4mm (1)	EFLH1433	116	Aluminum Tail Rotor Hub (1)	EFLH1469
050	Main Shaft (1)	EFLH1447	117	Bearing 2×6×3mm (4)	EFLH1121
051	Tail Boom Brace/Support End, Straight (2)	EFLH1461	118	Socket Head Cap Screw M2×7mm (3)	EFLH1473
052	Tail Boom Brace/Support Rod (2)	EFLH1461	119	Tail Rotor Blade (2)	EFLH1471
053	Screw T2×6mm (11)	EFLH1473	120	Tail Rotor Pitch Control Ball Link (2)	EFLH1468
054	DS75 Digital Sub-Micro Servo (4)	EFLRDS75	121	Tail Rotor Pitch Control Fork/Yoke (1)	EFLH1468
055	Aileron/Pitch Servo Arm (2)	EFLH1476	122	Spacer/Crush Sleeve 2×3×4.6mm (1)	EFLH1467
056	Linkage Rod/Pushrod, 26mm (1)	EFLH1438	123	Specialty Pin Screw T2.3×4mm (2)	EFLH1467
057	Socket Head Button Screw M2.5×7mm (4)	EFLH1473	124	Tail Rotor Pitch Lever (1)	EFLH1467
058	Tail Boom Brace/Support End, Angled (2)	EFLH1461	125	Tail Case, Right (1)	EFLH1463
059	Cap Washer (4)	EFLH1443	126	Tail Rotor Shaft (1)	EFLH1465
060	Main Frame, Right (1)	EFLH1439	127	Tail Drive Belt Guide Pulley/Tensioner (1)	EFLH1464
061	Canopy Mount Grommet (2)	EFLH1479	128	Bearing 2×5×2.5mm (1)	EFLH1464
062	Body/Canopy (1)	EFLH1481	129	Tail Rotor Shaft Drive Pulley (1)	EFLH1465
063	420H Brushless Motor (1)	EFLM1350H	130	Tail Rotor Shaft Drive Pulley Cap (1)	EFLH1465
064	Linkage Rod/Pushrod, 32mm (1)	EFLH1438	131	Spacer 3×4×3.5mm (1)	EFLH1465
065	10-Tooth Pinion Gear (1)	EFLH1410	132	Tail Case, Left (1)	EFLH1463
066	Bearing 5×10×4mm (3)	EFLH1442	133	Vertical Stabilizer/Fin (1)	EFLH1472Y
067	Canopy Mount Rod (1)	EFLH1479	134	Screw M2×14mm (2)	EFLH1473
068	Elevator Control Lever (1)	EFLH1440			